



COASTAL FACADE

DARWIN




4 2 2

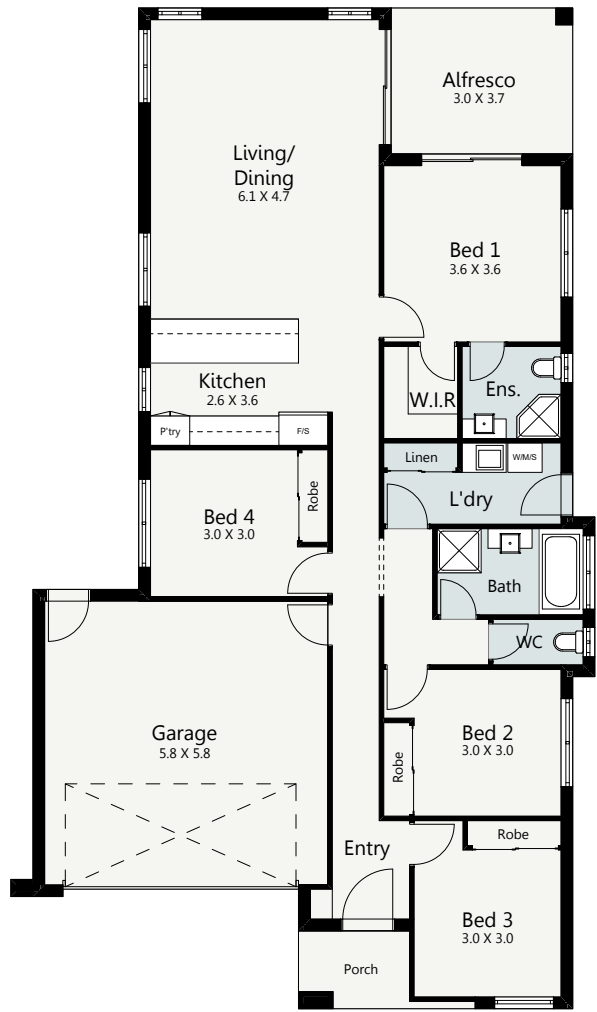
The Darwin is a stylish low maintenance home design that offers great features and great value. Featuring four bedrooms with large master suite with walk in robe and ensuite, a spacious entertainer's kitchen in the open plan dining and living space and a beautiful alfresco area that's seamlessly integrated off the main living area and master, this home has been designed with a modern families and low maintenance living in mind.

HOME SPECIFICATIONS

WIDTH	11.92m
LENGTH	20.88m
TOTAL	188.01m ²

SUITS MINIMUM BLOCK WIDTH OF

◀ **13M** ▶



*Floor plan portrays the Coastal Facade and may differ from other facade options.

- OPTIONAL FACADES
- CUSTOMISABLE PLANS
- QUALITY INCLUSIONS
- COLOUR CONSULTANT

Disclaimer: Photographs and illustrations are intended to be a visual aid only. Evolution Building Group gives no warranty and makes no representation to the accuracy or sufficiency of any description, illustration, photograph or statement contained in this brochure and accepts no liability for any loss suffered by any person who relies on either wholly or partly upon the information presented. All information is subject to change without notice. Copyright: All rights reserved. No part of this brochure may be reproduced, stored or transmitted in any form without written permission from Evolution Building Group. Evolution Building Group Pty Ltd, ABN: 93147075992 Lic No 259797c EBG_DARWIN_COASTAL_V1