



ENDEAVOUR



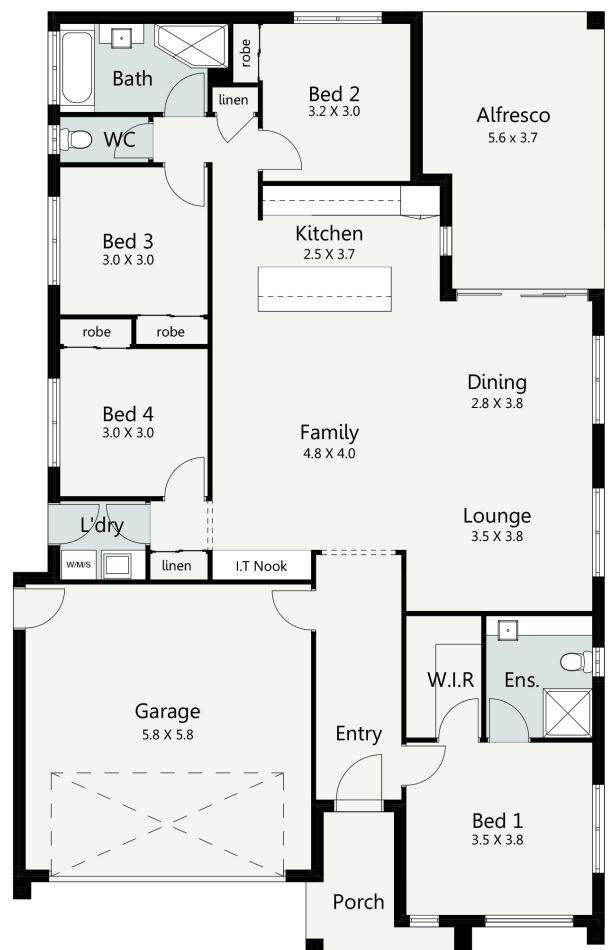
MODERN
FACADE

The Endeavour is a big family home with even bigger features. Created for maximum street appeal, this beautiful design boasts an abundance of natural light and space which the whole family will love. Featuring four bedrooms, the Endeavour includes a master suite at the front of the home complete with a generous walk in robe and ensuite. Located just up the hall you'll find the spacious open-plan living zone- with a stunning entertainer's kitchen and dining and living space that leads outside to your alfresco area. The home also features an additional family living room plus a study nook, perfect for working from home or a kid's study space. The home is finished off with a spacious double garage and an inviting entrance that you'll simply love coming home to.

HOME SPECIFICATIONS

WIDTH	11.98m
LENGTH	19.17m
TOTAL	211.45m ²

SUITS MINIMUM BLOCK WIDTH OF



*Floor plan portrays the Modern Facade and may differ from other facade options.

OPTIONAL FACADES

CUSTOMISABLE PLANS

QUALITY INCLUSIONS

COLOUR CONSULTANT

Disclaimer: Photographs and illustrations are intended to be a visual aid only. Evolution Building Group gives no warranty and makes no representation to the accuracy or sufficiency of any description, illustration, photograph or statement contained in this brochure and accepts no liability for any loss suffered by any person who relies on either wholly or partly upon the information presented. All information is subject to change without notice. Copyright: All rights reserved. No part of this brochure may be reproduced, stored or transmitted in any form without written permission from Evolution Building Group. Evolution Building Group Pty Ltd. ABN: 93147075992 Lic No 259797c EBG_ENDEAVOUR_MODERN_V1