



MODERN
FACADE

ALULA



Our stunning Alula design transcends modern style. This contemporary split level home features four spacious bedrooms including a luxurious master suite which is located at the front of the home with adjoining ensuite and walk in robe- separated from the other rooms for additional privacy. Alula is equipped with generous living spaces including an open plan living, kitchen and dining space, a beautiful alfresco area with seamless access to the living area and master bedroom with an additional three bedrooms and rumpus room, the perfect kids retreat or movie theatre. With multiple zones for the whole family to enjoy the Alula is the perfect choice.

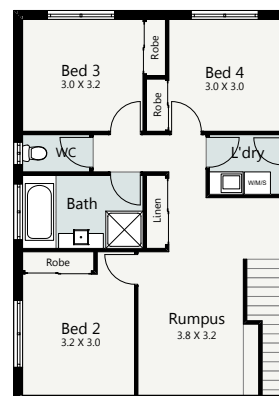


GROUND
FLOOR

HOME SPECIFICATIONS

WIDTH 8.85m
LENGTH 24.58m
TOTAL 208.41m²

SUITS MINIMUM
BLOCK WIDTH OF



LOWER
FLOOR

*Floor plan portrays the Modern Facade and may differ from other facade options.

OPTIONAL FACADES

CUSTOMISABLE PLANS

QUALITY INCLUSIONS

COLOUR CONSULTANT

Disclaimer: Photographs and illustrations are intended to be a visual aid only. Evolution Building Group gives no warranty and makes no representation to the accuracy or sufficiency of any description, illustration, photograph or statement contained in this brochure and accepts no liability for any loss suffered by any person who relies on either wholly or partly upon the information presented. All information is subject to change without notice. Copyright: All rights reserved. No part of this brochure may be reproduced, stored or transmitted in any form without written permission from Evolution Building Group. Evolution Building Group Pty Ltd. ABN: 93147075992 Lic No 259797c EBG_ALULA_MODERN_V1