



COASTAL  
FACADE

# COMPASS



The Compass oozes maximum street appeal and was created to celebrate modern family living, this home features four bedrooms with an additional media room and separate study so everyone will have their own space to enjoy.

On the ground floor you'll find an open plan living space with an entertainer's kitchen with an island bench and walk-in-pantry that seamlessly integrates with the dining area. This space then flows out to your large alfresco area, making it the perfect home for entertaining family and friends.

Upstairs, a media room that could serve as the perfect family retreat divides the main bathroom, study nook and two bedrooms from the master suite located at the rear of the home. The master suite serves as the ideal place to relax in at the end of the day and boasts a luxurious ensuite with his and her basins and a generous walk-in-robe.

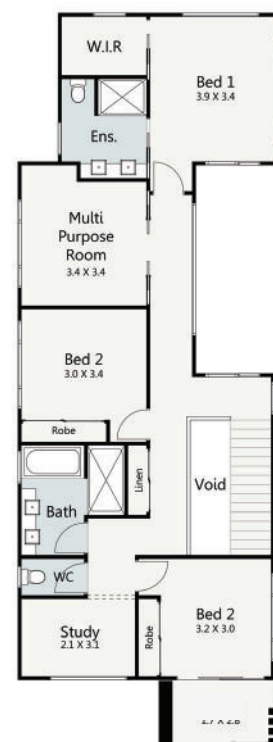
## HOME SPECIFICATIONS

WIDTH	9.16m
LENGTH	24.18m
TOTAL	293.79m <sup>2</sup>

SUITS MINIMUM  
BLOCK WIDTH OF



GROUND FLOOR



FIRST FLOOR

\*Floor plan portrays the Coastal Facade and may differ from other facade options.

OPTIONAL FACADES

CUSTOMISABLE PLANS

QUALITY INCLUSIONS

COLOUR CONSULTANT

Disclaimer: Photographs and illustrations are intended to be a visual aid only. Evolution Building Group gives no warranty and makes no representation to the accuracy or sufficiency of any description, illustration, photograph or statement contained in this brochure and accepts no liability for any loss suffered by any person who relies on either wholly or partly upon the information presented. All information is subject to change without notice. Copyright: All rights reserved. No part of this brochure may be reproduced, stored or transmitted in any form without written permission from Evolution Building Group. Evolution Building Group Pty Ltd. ABN: 93147075992 Lic No 259797c EBG\_NC\_COMPASS\_COASTAL\_V1