



MODERN  
FACADE

NEXT COLLECTION

# MONTAUK



Our Montauk design fuses design with timeless style. This four bedroom home features open plan spaces that have been designed with family living in mind. Your master suite boasts a well-appointed walk in robe as well as a beautiful ensuite, providing the ultimate parents retreat at the end of a busy day. Cook up a storm in the entertainer's kitchen complete with a walk in pantry and large island bench or entertain family and friends in your alfresco area which seamlessly connects to your open plan living and dining space.

## HOME SPECIFICATIONS

WIDTH 11.67m  
LENGTH 22.95m  
TOTAL 320.66m<sup>2</sup>

SUITS MINIMUM  
BLOCK WIDTH OF

13.50M

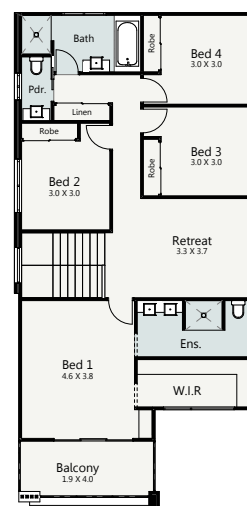
\*Floor plan portrays the Modern Facade and may differ from other facade options.

OPTIONAL FACADES

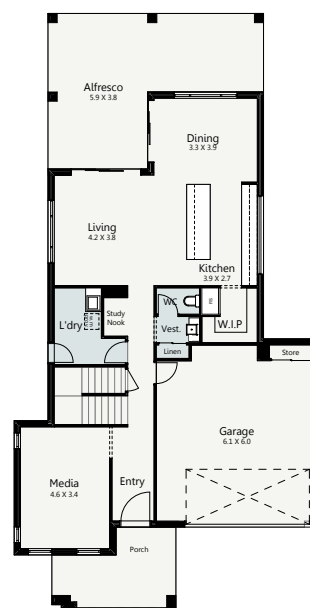
CUSTOMISABLE PLANS

QUALITY INCLUSIONS

COLOUR CONSULTANT



FIRST  
FLOOR



GROUND  
FLOOR

Disclaimer: Photographs and illustrations are intended to be a visual aid only. Evolution Building Group gives no warranty and makes no representation to the accuracy or sufficiency of any description, illustration, photograph or statement contained in this brochure and accepts no liability for any loss suffered by any person who relies on either wholly or partly upon the information presented. All information is subject to change without notice. Copyright: All rights reserved. No part of this brochure may be reproduced, stored or transmitted in any form without written permission from Evolution Building Group, Evolution Building Group Pty Ltd. ABN: 93147075992 Lic No 259797c EBG\_NC\_MONTAUK\_MODERN\_V1



02 4244 1212 | [www.evolutionbuildinggroup.com.au](http://www.evolutionbuildinggroup.com.au)

**EVOLUTION**  
BUILDING GROUP