



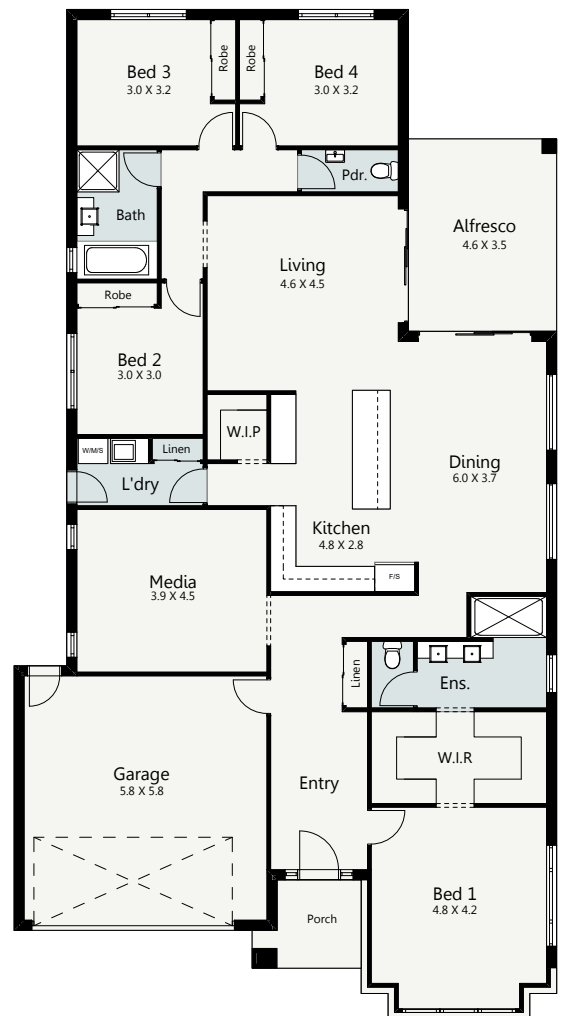
CRAFTSMAN FACADE

ORBIT




4 2 2

As soon as you walk in the front door you'll be instantly impressed with the overwhelming sense of space, freedom and comfort that the Orbit offers. Featuring four bedrooms with a private master suite that boasts a luxurious his and hers walk in robe and ensuite, the Orbit has been designed to accommodate a growing family for years to come. Relax and enjoy time with family and friends in the open plan living and dining zone with entertainer's kitchen and large island bench or simple enjoy the outdoors from your alfresco area that extends gracefully out from this main living zone in the heart of the home. With an additional media room, ample storage and a double garage the Orbit will win you over with its intelligent floorplan, versatile layout and stylish appeal.



HOME SPECIFICATIONS

WIDTH	12.88m
LENGTH	23.96m
TOTAL	262.59m²

SUITS MINIMUM BLOCK WIDTH OF

◀ **15M** ▶

*Floor plan portrays the Craftsman Facade and may differ from other facade options.

- OPTIONAL FACADES
- CUSTOMISABLE PLANS
- QUALITY INCLUSIONS
- COLOUR CONSULTANT

Disclaimer: Photographs and illustrations are intended to be a visual aid only. Evolution Building Group gives no warranty and makes no representation to the accuracy or sufficiency of any description, illustration, photograph or statement contained in this brochure and accepts no liability for any loss suffered by any person who relies on either wholly or partly upon the information presented. All information is subject to change without notice. Copyright: All rights reserved. No part of this brochure may be reproduced, stored or transmitted in any form without written permission from Evolution Building Group. Evolution Building Group Pty Ltd, ABN: 93147075992 Lic No 259797c EBG_ORBIT_CRAFTSMAN_V1