



MODERN
FACADE

PLUTO



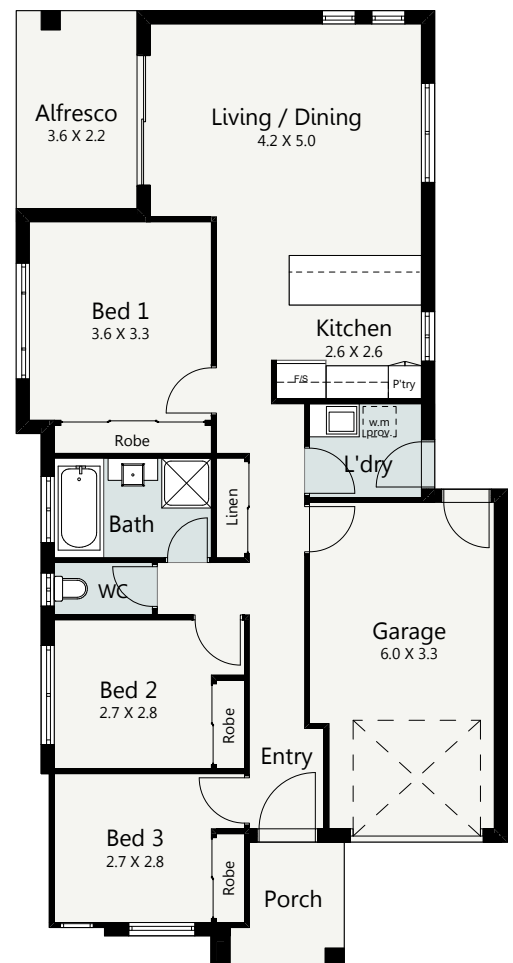
The Pluto has been meticulously planned by Evolution Building Group to suit narrow lots. Offering three bedrooms, the Pluto design will make you the envy of all of your neighbours. Boasting open plan living spaces that have been designed for functionality and entertaining. Featuring an intelligent floorplan that places all of the bedrooms down one side of the home, an open plan living and dining space with entertainer's kitchen, this home has been designed with everyone in mind.

HOME SPECIFICATIONS

WIDTH 8.91m
LENGTH 17.35m
TOTAL 129.71m²

SUITS MINIMUM
BLOCK WIDTH OF

◀ 10M ▶



*Floor plan portrays the Modern Facade and may differ from other facade options.

OPTIONAL FACADES

CUSTOMISABLE PLANS

QUALITY INCLUSIONS

COLOUR CONSULTANT

Disclaimer: Photographs and illustrations are intended to be a visual aid only. Evolution Building Group gives no warranty and makes no representation to the accuracy or sufficiency of any description, illustration, photograph or statement contained in this brochure and accepts no liability for any loss suffered by any person who relies on either wholly or partly upon the information presented. All information is subject to change without notice. Copyright: All rights reserved. No part of this brochure may be reproduced, stored or transmitted in any form without written permission from Evolution Building Group. Evolution Building Group Pty Ltd. ABN: 93147075992 Lic No 259797c EBG_PLUTO_MODERN_V1