



MODERN  
FACADE

# CALYPSO



Our Calypso design has been planned to perfection, optimising space and delivering a large contemporary split level four bedroom, two bathroom home. Featuring an integrated dining, living and entertainer's kitchen with walk in pantry and an alfresco area with an additional multi purpose room, this home has been designed with family living in mind. The master suite with ensuite and walk in robe is separate from the other bedrooms which are located on the lower level with an additional rumpus room which could be used as a movie theatre or kids play room. The Calypso is a modern home that celebrates everything we love about family with comfortable living spaces for the whole family to enjoy.

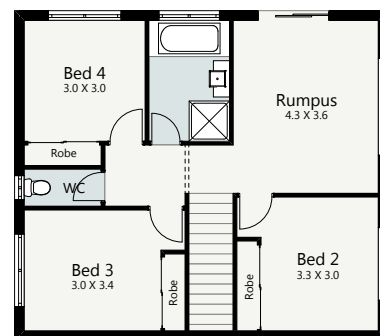
## HOME SPECIFICATIONS

WIDTH 12.85m  
LENGTH 22.73m  
TOTAL 251.01m<sup>2</sup>

SUITS MINIMUM  
BLOCK WIDTH OF



GROUND  
FLOOR



LOWER  
FLOOR

\*Floor plan portrays the Modern Facade and may differ from other facade options.

OPTIONAL FACADES

CUSTOMISABLE PLANS

QUALITY INCLUSIONS

COLOUR CONSULTANT

Disclaimer: Photographs and illustrations are intended to be a visual aid only. Evolution Building Group gives no warranty and makes no representation to the accuracy or sufficiency of any description, illustration, photograph or statement contained in this brochure and accepts no liability for any loss suffered by any person who relies on either wholly or partly upon the information presented. All information is subject to change without notice. Copyright: All rights reserved. No part of this brochure may be reproduced, stored or transmitted in any form without written permission from Evolution Building Group. Evolution Building Group Pty Ltd. ABN: 93147075992 Lic No 259797c EBG\_CALYPSO\_MODERN\_V1