



ACREAGE

FORTUNA



4



2



2

CRAFTSMAN
FACADE

Right from the impressive entrance, the meticulously planned Fortuna house design, by the award-winning new home building company Evolution Building Group, will captivate your family and friends. On one side is the formal living room and entertainers kitchen together with the master bedroom suite. The other side of the entrance, leads to a multi purpose room and the three additional bedrooms. The Fortuna will offer you the perfect balance of family living.

HOME SPECIFICATIONS (m²)

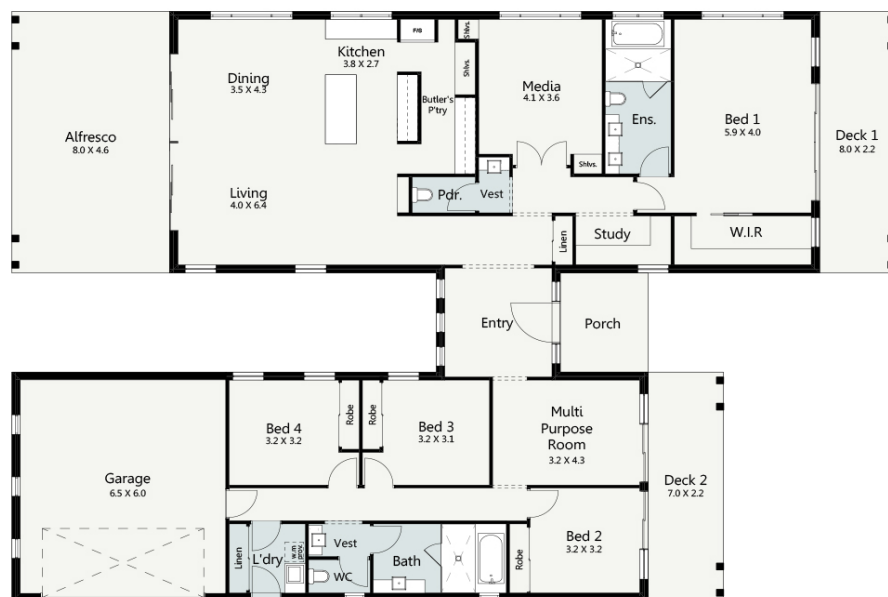
WIDTH 17.96m

LENGTH 25.75m

TOTAL 368.47m²

SUITS MINIMUM
BLOCK WIDTH OF

◀ 24M ▶



*Floor plan portrays the Craftsman Facade and may differ from other facade options.

OPTIONAL FACADES

CUSTOMISABLE PLANS

QUALITY INCLUSIONS

COLOUR CONSULTANT

Disclaimer: Photographs and illustrations are intended to be a visual aid only. Evolution Building Group gives no warranty and makes no representation to the accuracy or sufficiency of any description, illustration, photograph or statement contained in this brochure and accepts no liability for any loss suffered by any person who relies on either wholly or partly upon the information presented. All information is subject to change without notice. Copyright: All rights reserved. No part of this brochure may be reproduced, stored or transmitted in any form without written permission from Evolution Building Group. Evolution Building Group Pty Ltd. ABN: 93147075992 Lic No 259797c EBG_FORTUNA_CRAFTSMAN_V1