

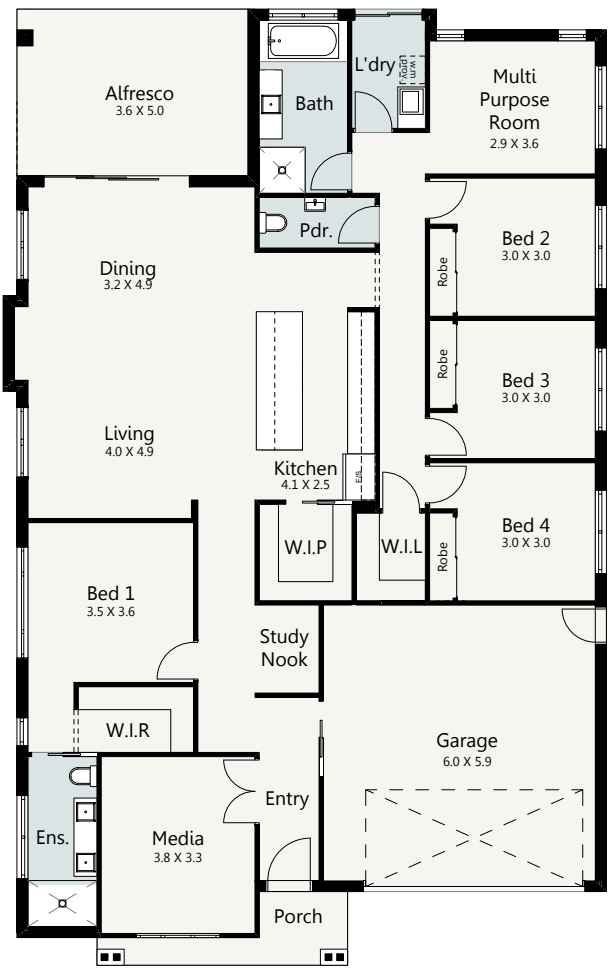


CRAFTSMAN FACADE

# SUFFOLK

 **4**
 **2**
 **2**

The Suffolk offers real heart and soul, inspired by modern family living to offer every member of the family a place to relax and unwind. The entertainer's kitchen features a walk in pantry and island bench which overlooks your open plan living and dining area that opens out onto your large alfresco area designed as the perfect space to entertain family and friends. The luxurious master suite features a generous walk in robe and spacious ensuite with double vanities to provide the ultimate parents retreat. The Suffolk also features an additional media room plus a study nook, perfect for working from home or a kid's study space. The home is finished off with a spacious double garage and an inviting entrance that you'll simply love coming home to.



**HOME SPECIFICATIONS**

WIDTH	13.10m
LENGTH	20.76m
TOTAL	254.65m <sup>2</sup>

**SUITS MINIMUM  
BLOCK WIDTH OF**

**◀ 15M ▶**

\*Floor plan portrays the Craftsman Facade and may differ from other facade options.

- OPTIONAL FACADES
- CUSTOMISABLE PLANS
- QUALITY INCLUSIONS
- COLOUR CONSULTANT

Disclaimer: Photographs and illustrations are intended to be a visual aid only. Evolution Building Group gives no warranty and makes no representation to the accuracy or sufficiency of any description, illustration, photograph or statement contained in this brochure and accepts no liability for any loss suffered by any person who relies on either wholly or partly upon the information presented. All information is subject to change without notice. Copyright: All rights reserved. No part of this brochure may be reproduced, stored or transmitted in any form without written permission from Evolution Building Group. Evolution Building Group Pty Ltd. ABN: 93147075992 Lic No 259797c EBG\_SUFFOLK\_CRAFTSMAN\_V1



 (02) 4244 1212

 [www.evolutionbuildinggroup.com.au](http://www.evolutionbuildinggroup.com.au)

