



TRADITIONAL FACADE

# GEMINI

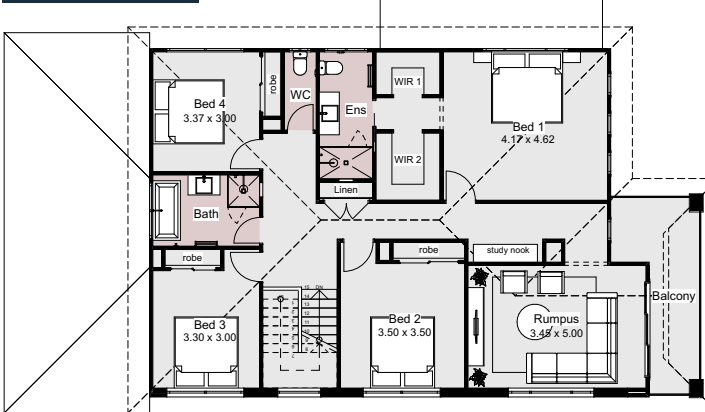


  
**4 2 2**

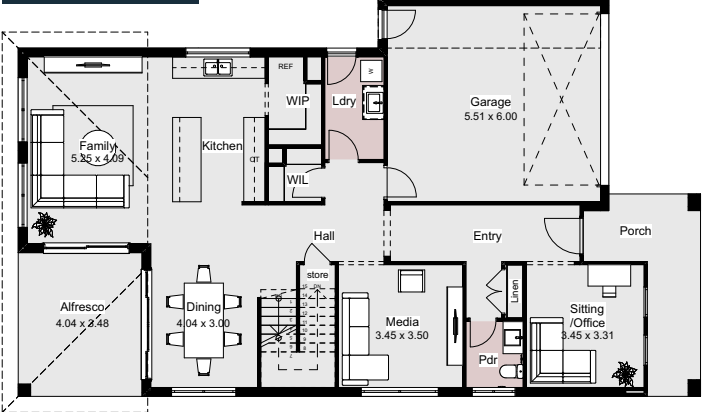
The Gemini is a contemporary double-storey, four-bedroom home crafted for spacious and comfortable living. The ground floor is an entertainer's paradise, featuring an open-plan living and dining area alongside a stylish kitchen with a large walk-in pantry and island bench—perfect for hosting gatherings and dinner parties.

Upstairs, the expansive master suite comes complete with a private ensuite and his-and-hers walk-in robes. Three additional generously sized bedrooms, a separate rumpus room and balcony, provide ample space for family living. With abundant natural light and a well-thought-out design, this home delivers luxurious living in every detail.

## FIRST FLOOR



## GROUND FLOOR



**HOME SPECIFICATIONS**

WIDTH	11.23m
LENGTH	19.18m
TOTAL	327.6m <sup>2</sup>

SUITS MINIMUM  
BLOCK WIDTH OF  
**13M**

\*Floor plan portrays the Traditional Facade and may differ from other facade options.

- OPTIONAL FACADES
- CUSTOMISABLE PLANS
- QUALITY INCLUSIONS
- COLOUR CONSULTANT

Disclaimer: Photographs and illustrations are intended to be a visual aid only. Evolution Building Group gives no warranty and makes no representation to the accuracy or sufficiency of any description, illustration, photograph or statement contained in this brochure and accepts no liability for any loss suffered by any person who relies on either wholly or partly upon the information presented. All information is subject to change without notice. Copyright: All rights reserved. No part of this brochure may be reproduced, stored or transmitted in any form without written permission from Evolution Building Group. Evolution Building Group Pty Ltd. ABN: 93147075992 Lic No 259797c EBG\_GEMINI\_TRADITIONAL\_V1